

Construction Drawings

Superseal Mechanically Attached

COPING DETAILS

SUP-001	Coping detail for a cold roof - mechanically attached
SUP-002	Coping detail for a warm roof - mechanically attached

EDGE DETAILS

SUP-101	Drip edge detail for a cold roof – mechanically attached
SUP-102	Drip edge detail for a warm roof – mechanically attached
SUP-105	Curb detail for a cold roof – mechanically attached
SUP-106	Curb detail for a warm roof – mechanically attached
SUP-109	Edge detail with gutter for a cold roof – mechanically attached
SUP-110	Edge detail with gutter for a warm roof – mechanically attached

PIPE DETAILS

SUP-201	Pipe detail for a cold roof - mechanically attached
SUP-202	Pipe detail for a warm roof - mechanically attached

DRAIN DETAILS

SUP-301	Drain detail for a cold roof - mechanically attached
SUP-302	Drain detail for a warm roof - mechanically attached
SUP-305	Overflow drain detail for a cold roof - mechanically attached
SUP-306	Overflow drain detail for a warm roof - mechanically attached

EXPANSION JOINT DETAILS

SUP-401	Expansion joint for a cold roof - mechanically attached
SUP-402	Expansion joint for a warm roof - mechanically attached

Construction Drawings

Superseal Mechanically Attached

WALL FLASHING DETAILS

SUP-501	Reglet counterflashing for a cold roof - mechanically attached
SUP-502	Reglet counterflashing for a warm roof - mechanically attached
SUP-505	Surface mounted counterflashing for a cold roof - mechanically attached
SUP-506	Surface mounted counterflashing for a warm roof - mechanically attached
SUP-509	Clad wall panel system counterflashing for a cold roof - mechanically attached
SUP-510	Clad wall panel system counterflashing for a warm roof - mechanically attached

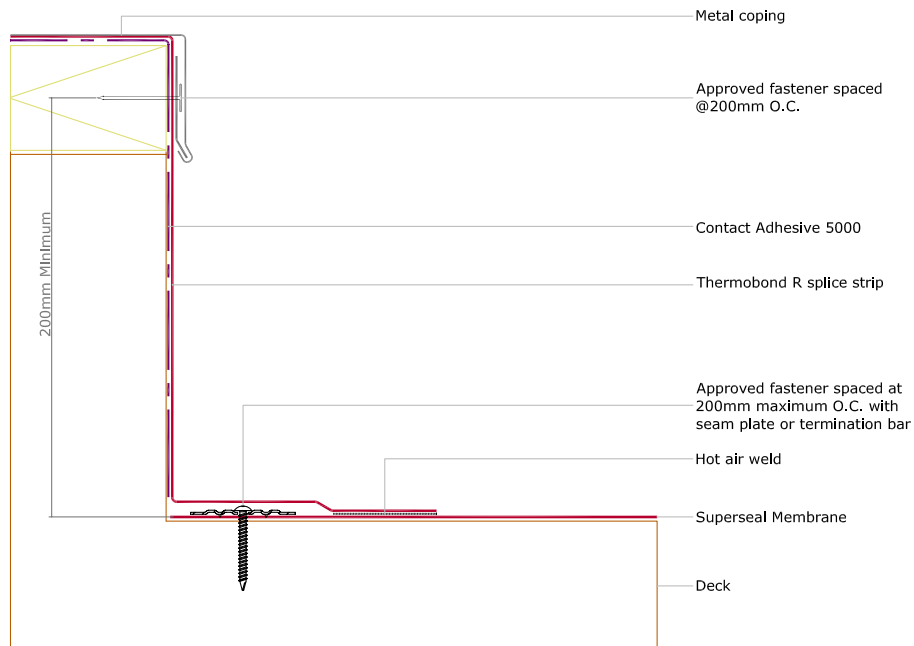
TRANSITION DETAILS

SUP-601	Multi-System Roof tie-in for a cold roof – mechanically attached
SUP-602	Multi-System Roof tie-in for a warm roof – mechanically attached
SUP-605	Valley detail for a cold roof – mechanically attached
SUP-606	Valley detail for a warm roof – mechanically attached
SUP-609	Ridge detail for a cold roof – mechanically attached
SUP-610	Ridge detail for a warm roof – mechanically attached
SUP-613	Multi-Level Roof tie-in for a cold roof – mechanically attached
SUP-614	Multi-Level Roof tie-in for a warm roof – mechanically attached

COPING DETAILS

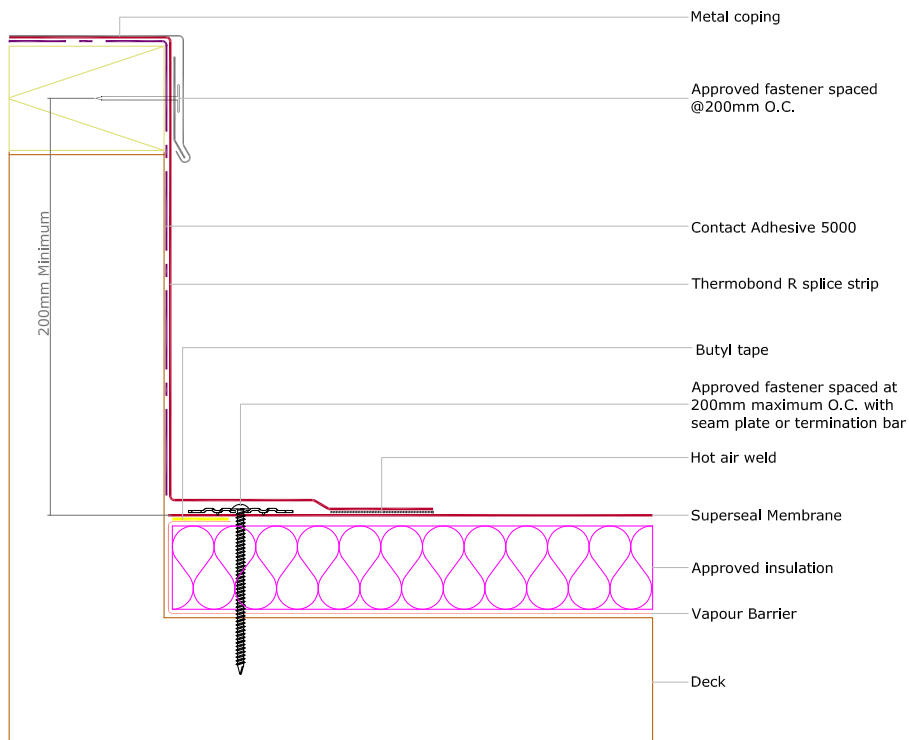
SUP-001

Coping detail for a cold roof - mechanically attached



SUP-002

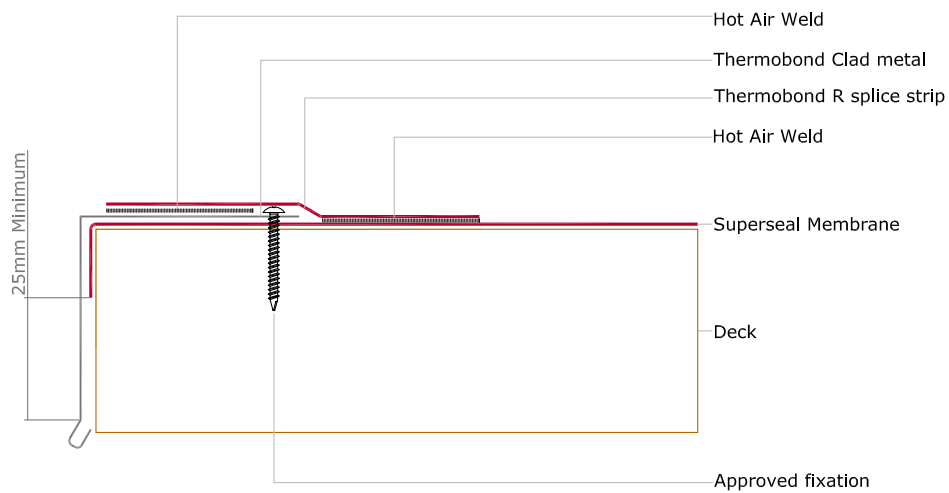
Coping detail for a warm roof - mechanically attached



EDGE DETAILS

SUP-101

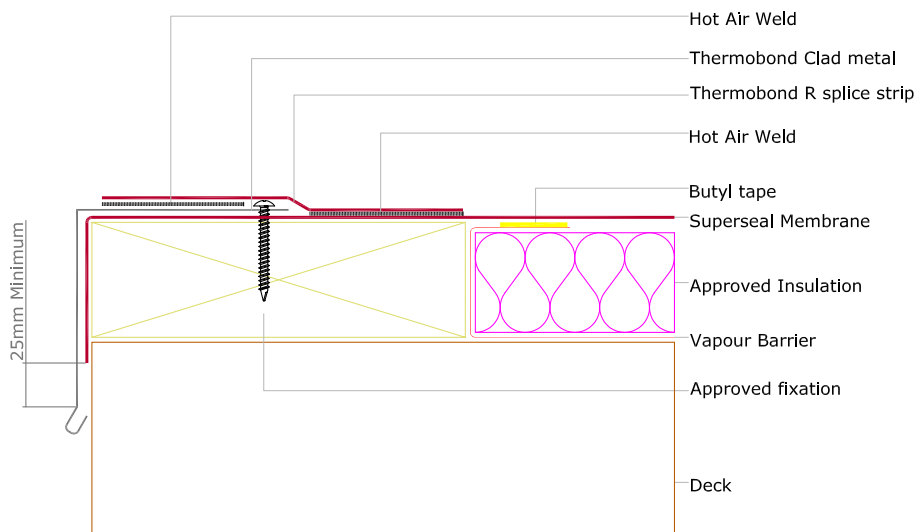
Drip edge detail for a cold roof – mechanically attached



This detail is only to be used where uncontrolled waterflow over the side of the building is acceptable.

SUP-102

Drip edge detail for a warm roof – mechanically attached

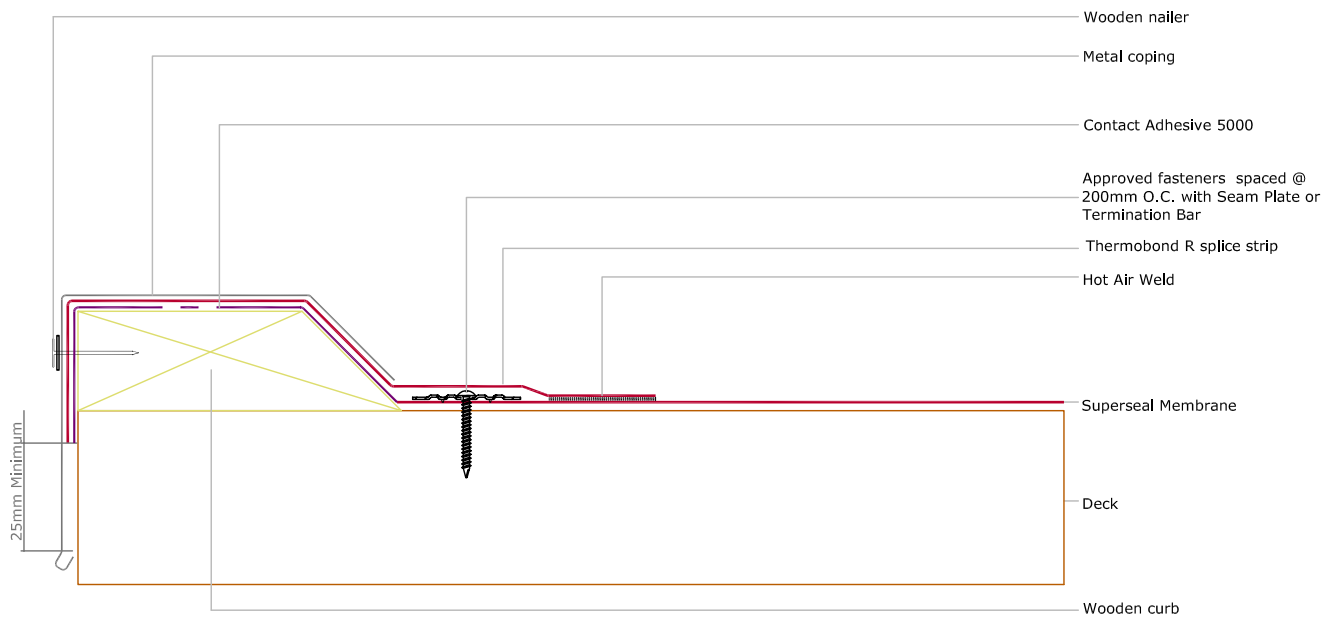


This detail is only to be used where uncontrolled waterflow over the side of the building is acceptable.

EDGE DETAILS

SUP-105

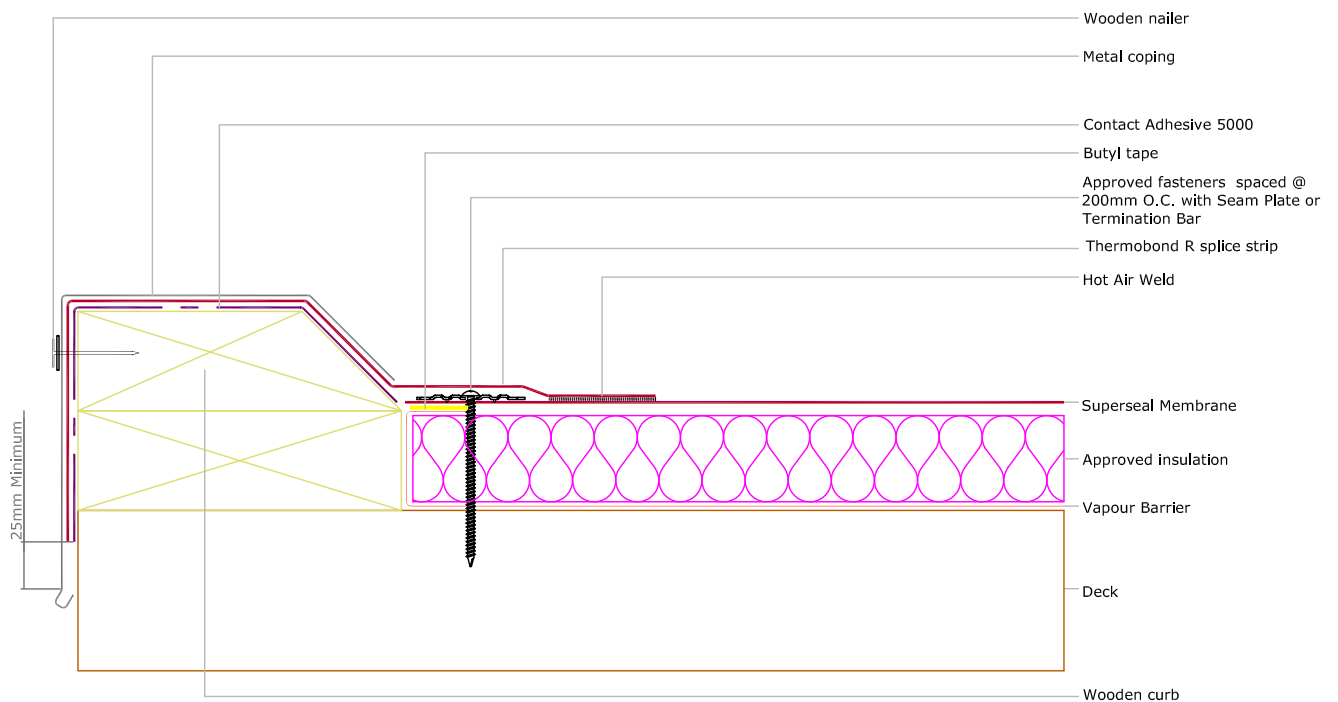
Curb detail for a cold roof – mechanically attached



This detail can alternatively be made by fixating the Superseal Membrane under the curb itself.

SUP-106

Curb detail for a warm roof – mechanically attached

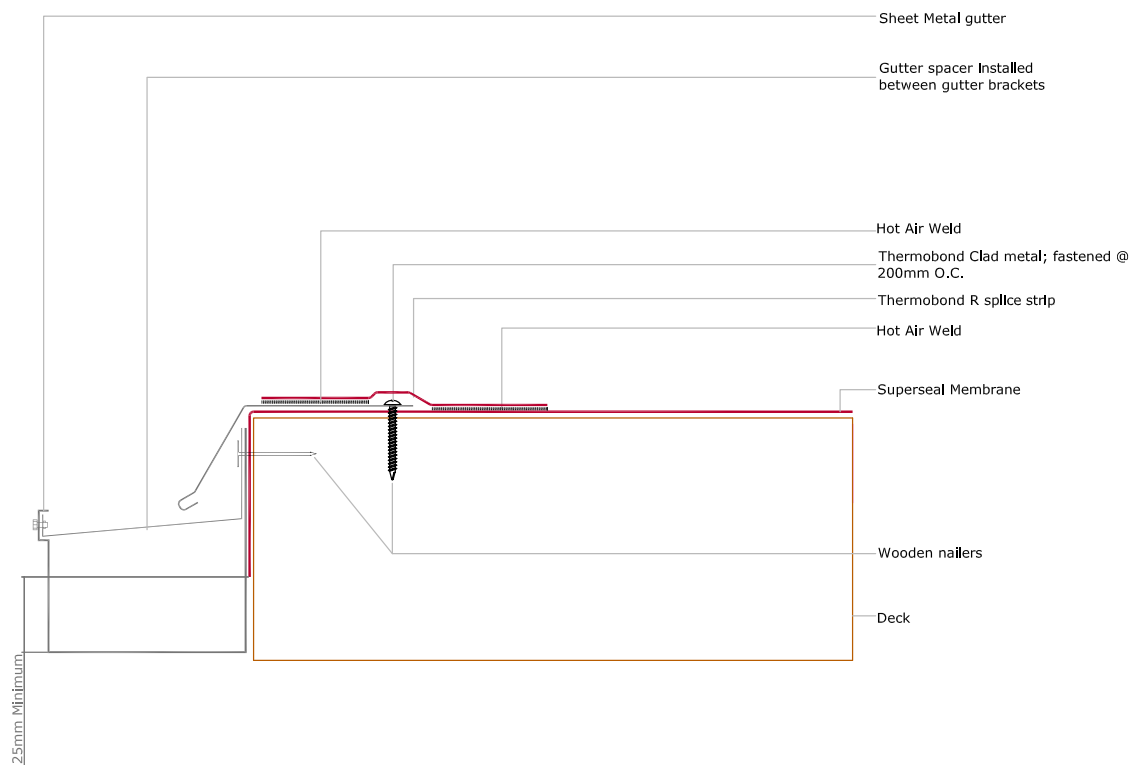


This detail can alternatively be made by fixating the Superseal Membrane under the curb itself.

EDGE DETAILS

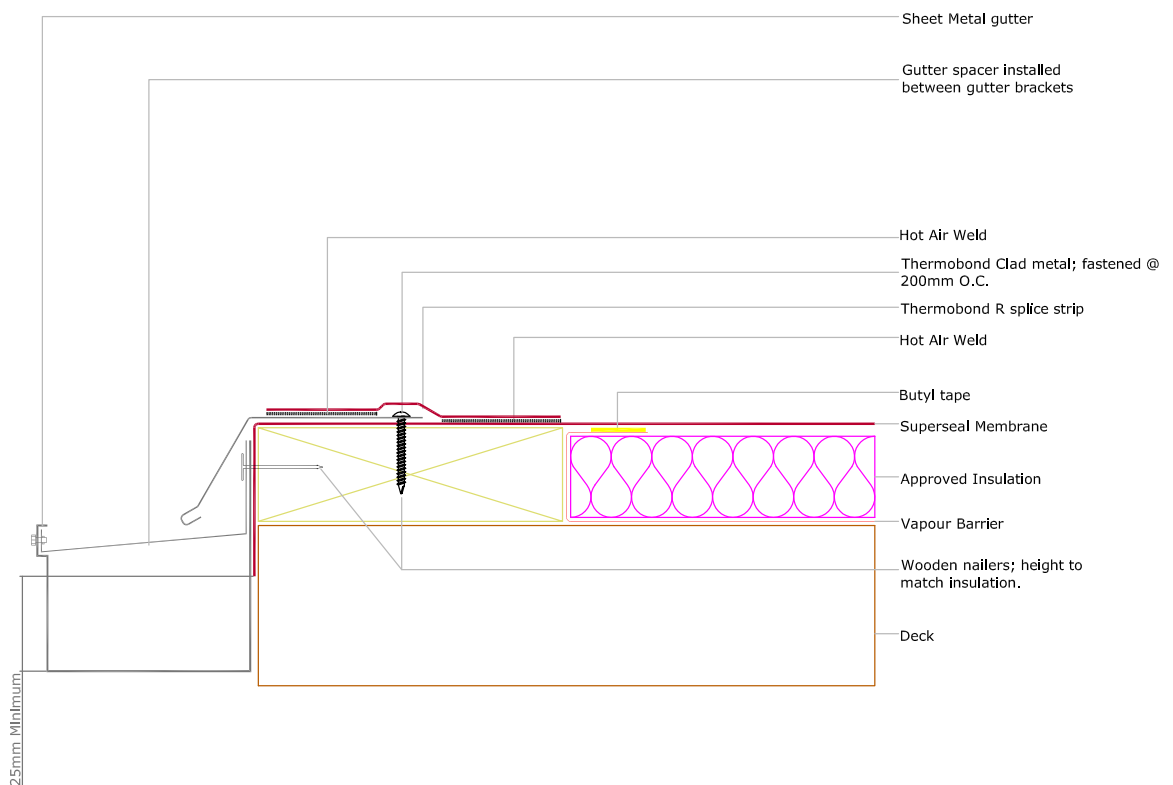
SUP-109

Edge detail with gutter for a cold roof – mechanically attached



SUP-110

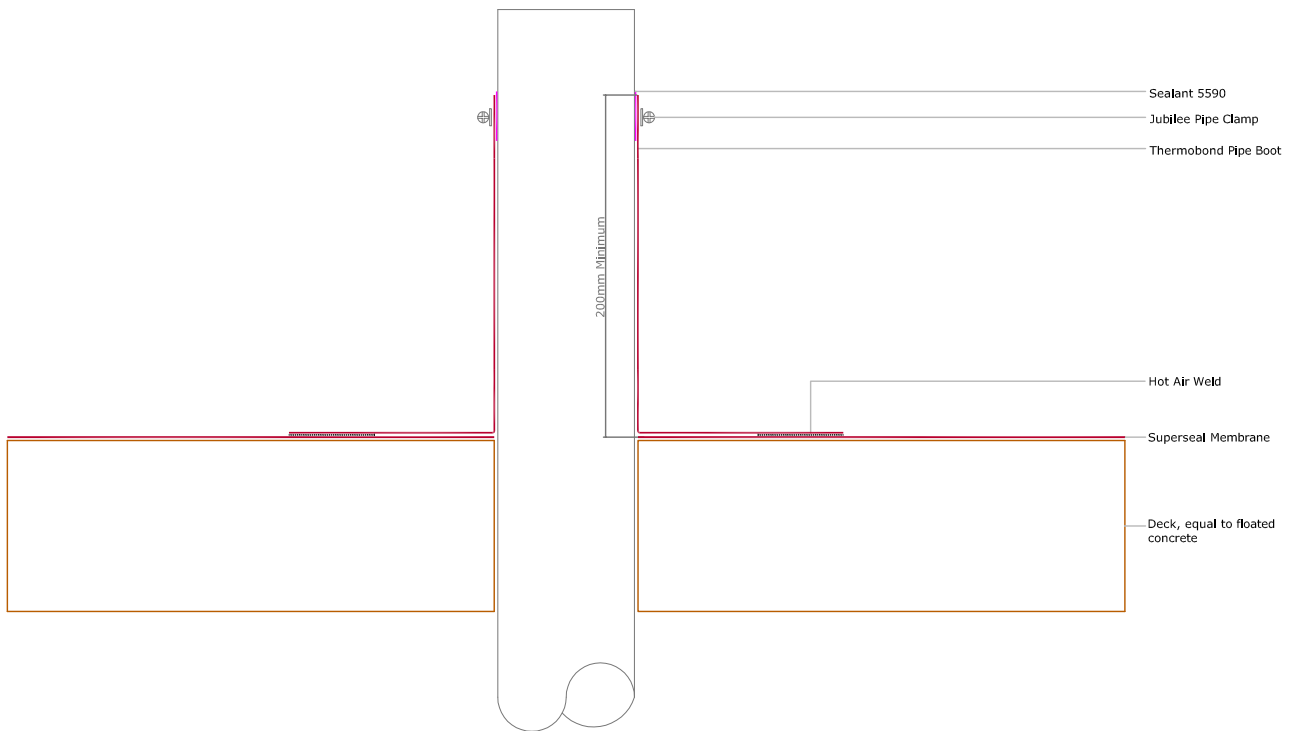
Edge detail with gutter for a warm roof – mechanically attached



PIPE DETAILS

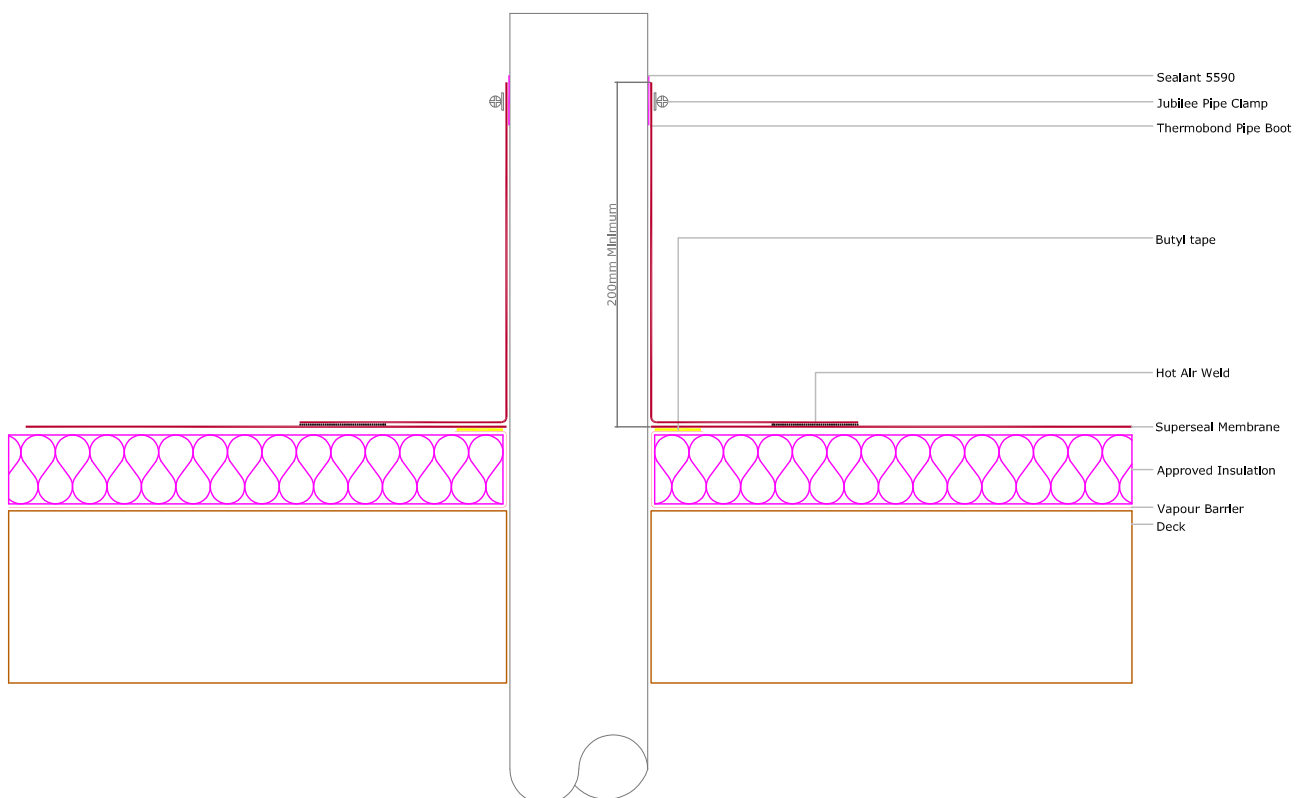
SUP-201

Pipe detail for a cold roof - mechanically attached



SUP-202

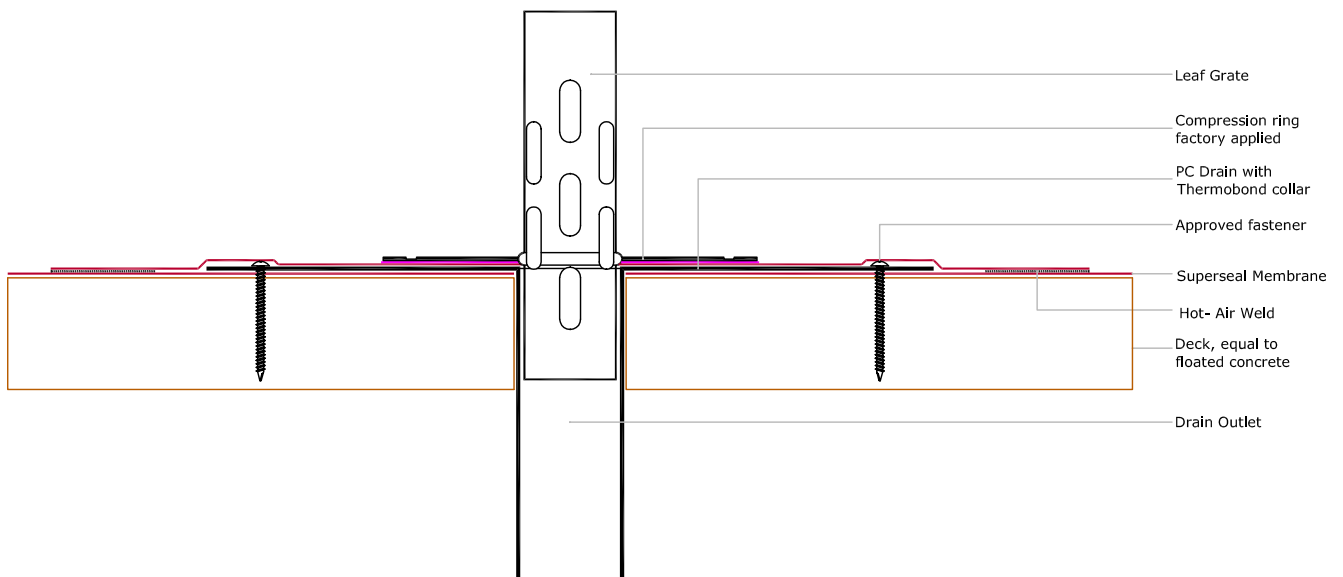
Pipe detail for a warm roof - mechanically attached



DRAIN DETAILS

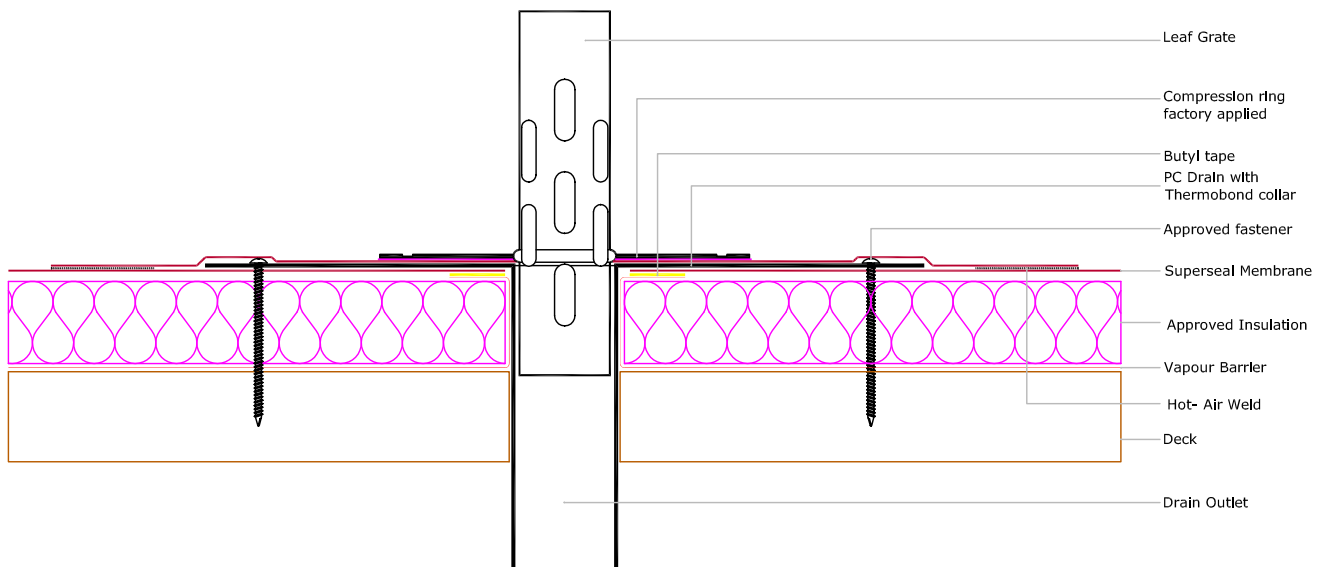
SUP-301

Drain detail for a cold roof - mechanically attached



SUP-302

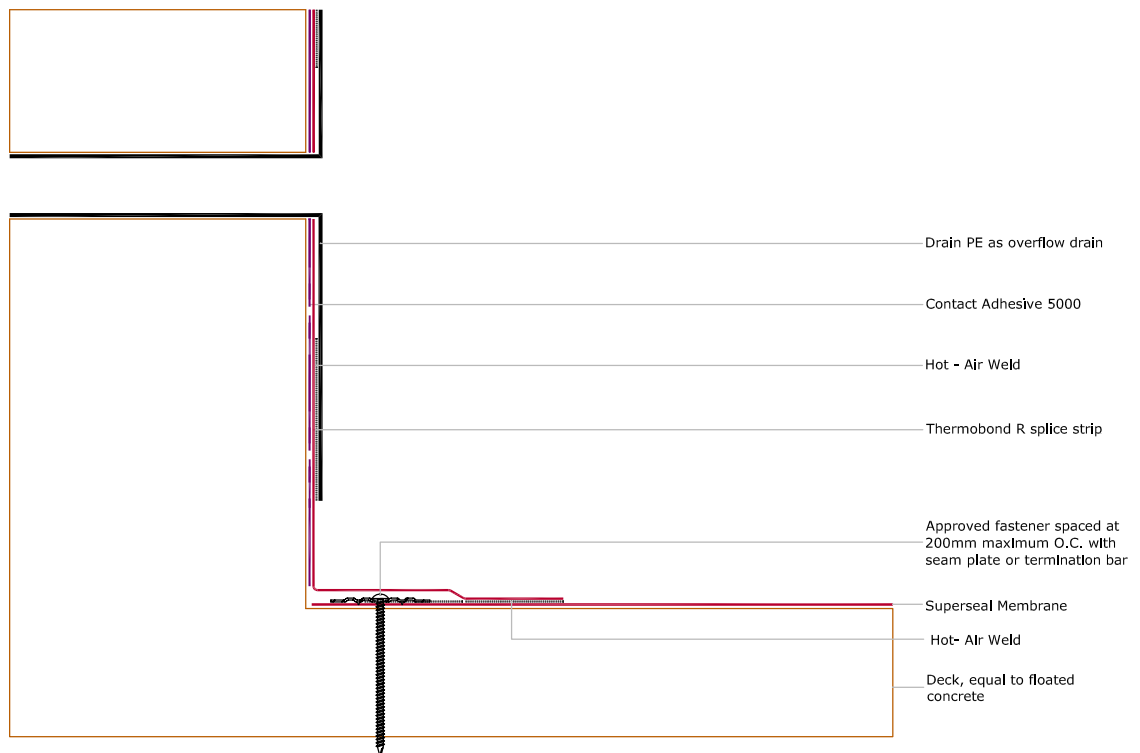
Drain detail for a warm roof - mechanically attached



DRAIN DETAILS

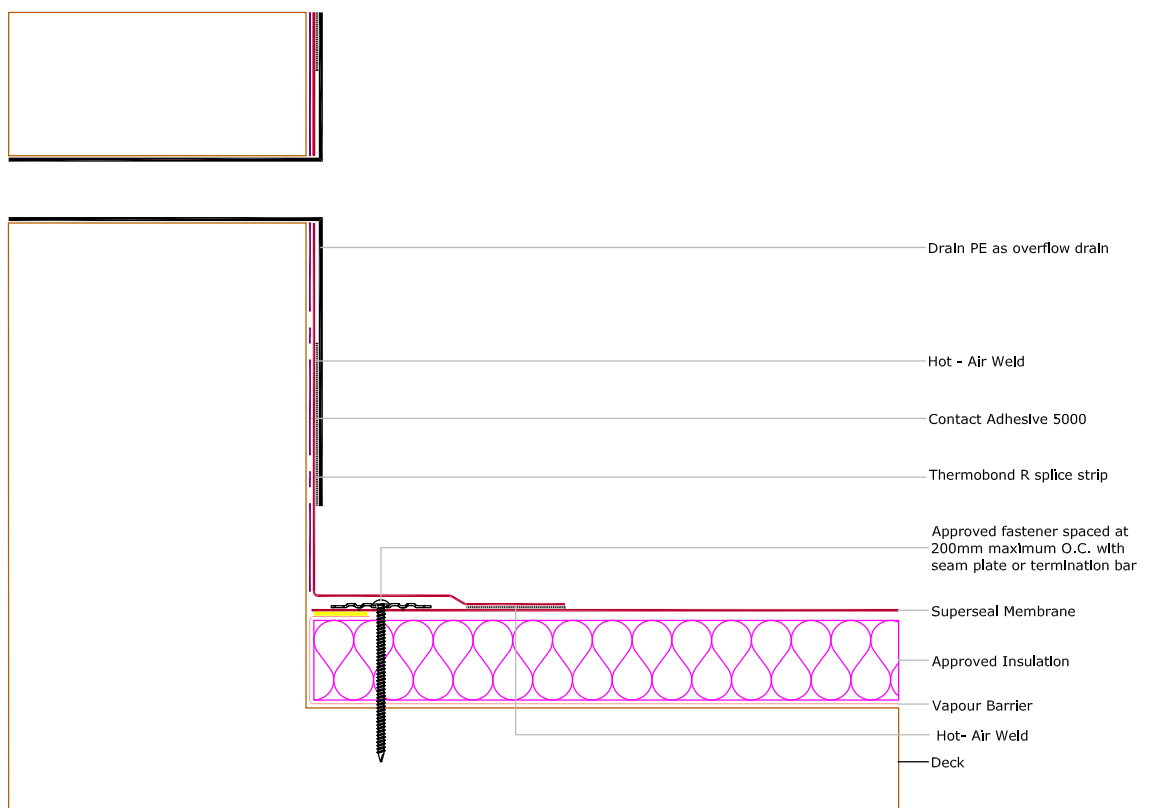
SUP-305

Overflow drain detail for a cold roof - mechanically attached



SUP-306

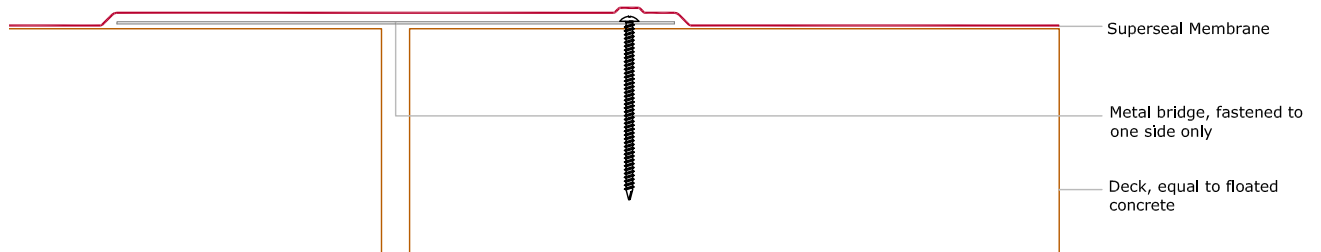
Overflow drain detail for a warm roof - mechanically attached



EXPANSION JOINT DETAILS

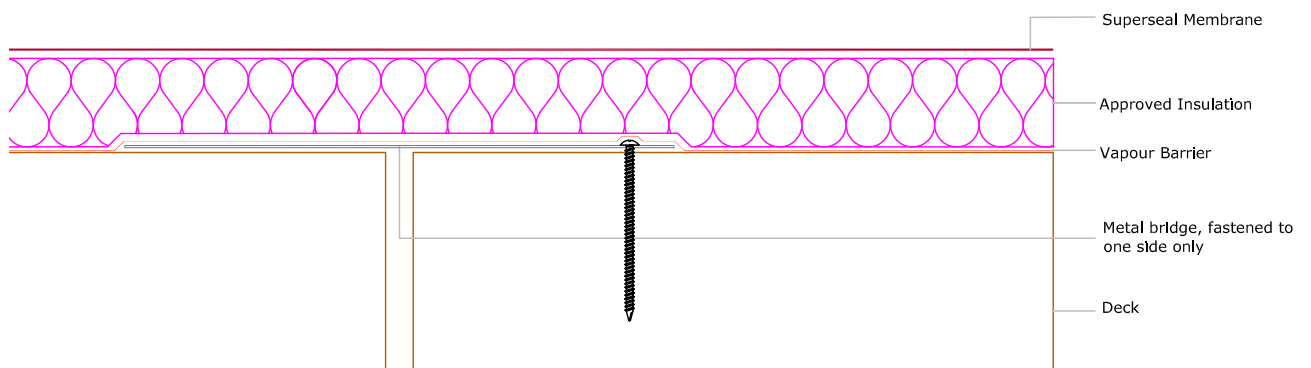
SUP-401

Expansion joint for a cold roof - mechanically attached

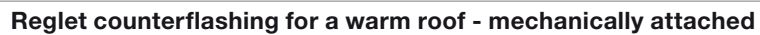


SUP-402

Expansion joint for a warm roof - mechanically attached



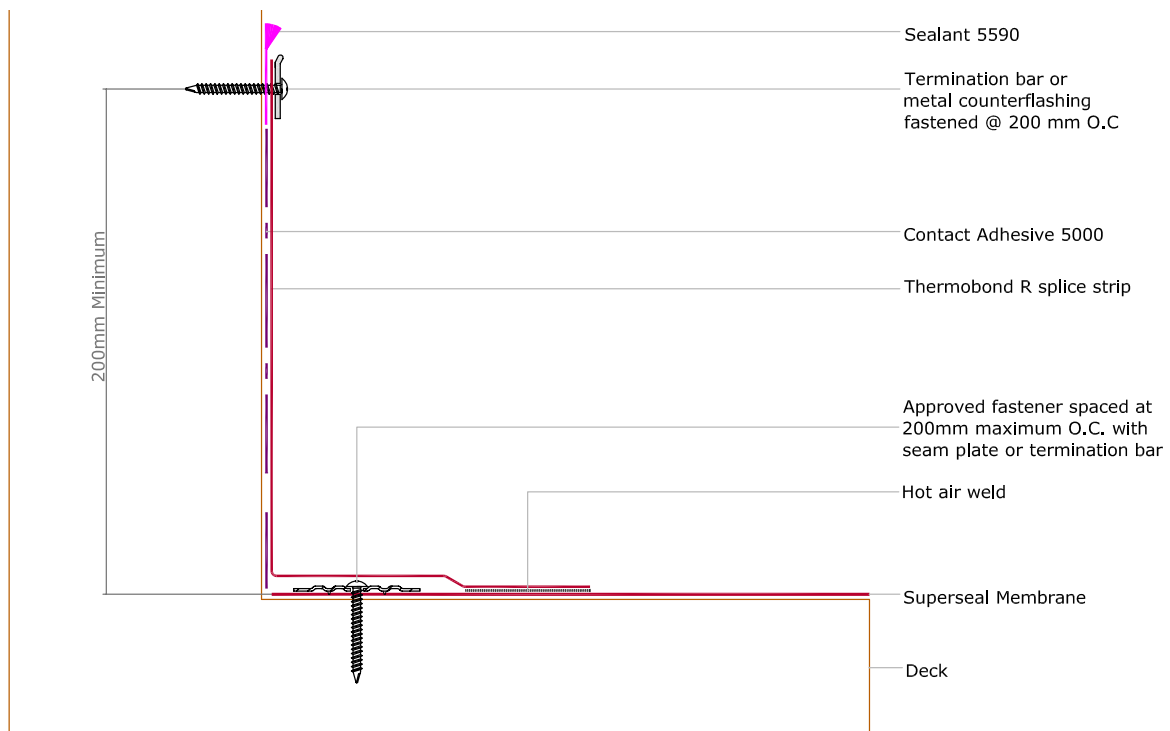
Reglet counterflashing for a cold roof - mechanically attached



WALL FLASHING DETAILS

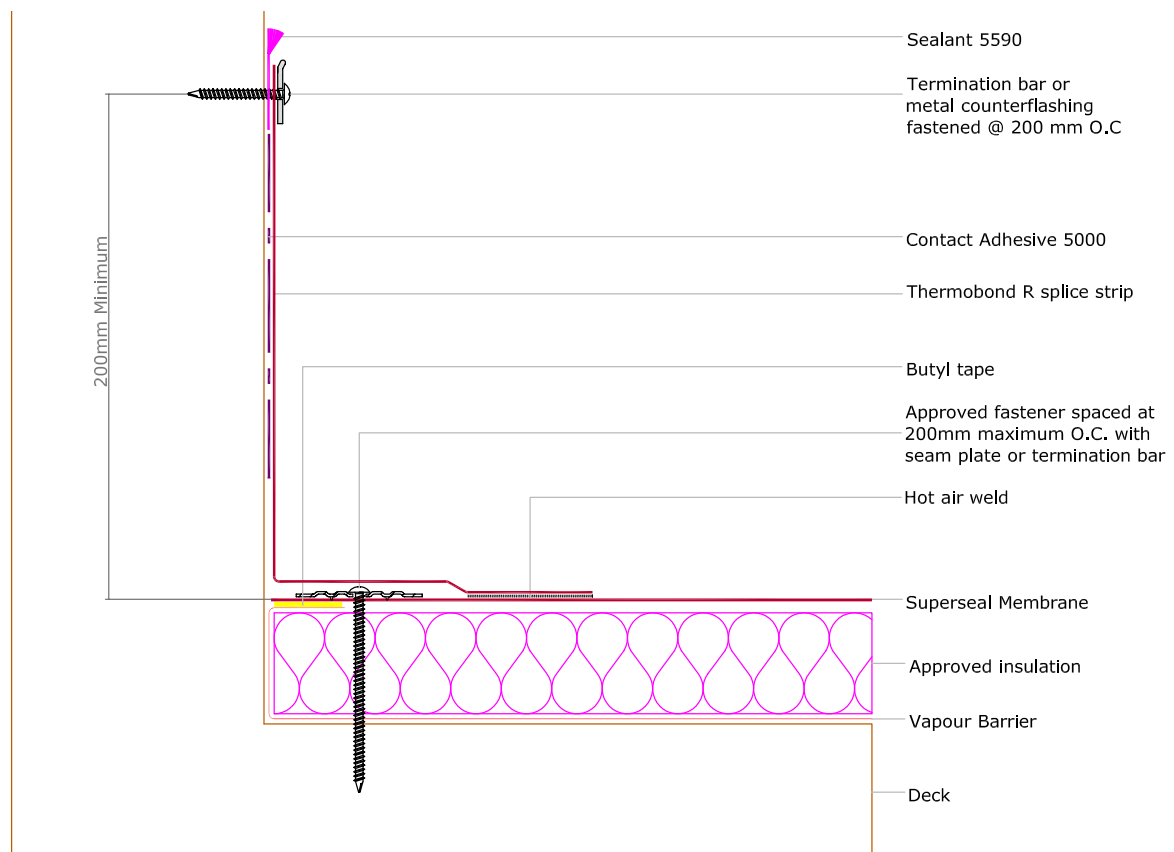
SUP-505

Surface mounted counterflashing for a cold roof - mechanically attached



SUP-506

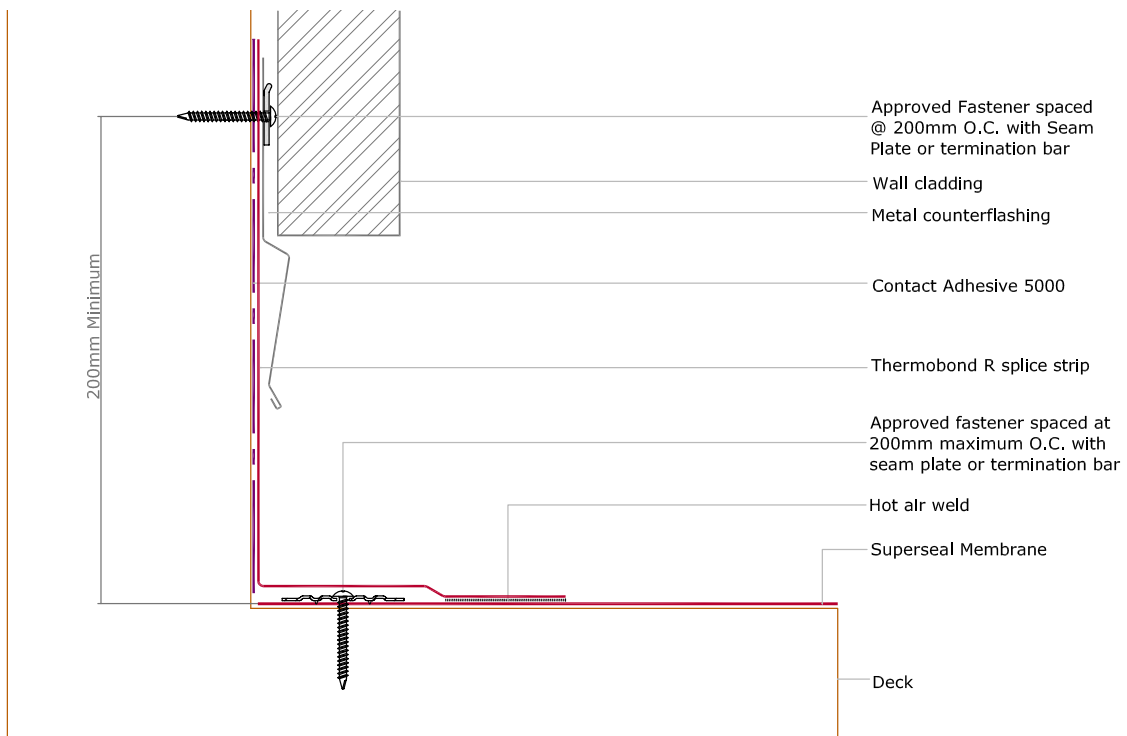
Surface mounted counterflashing for a warm roof - mechanically attached



WALL FLASHING DETAILS

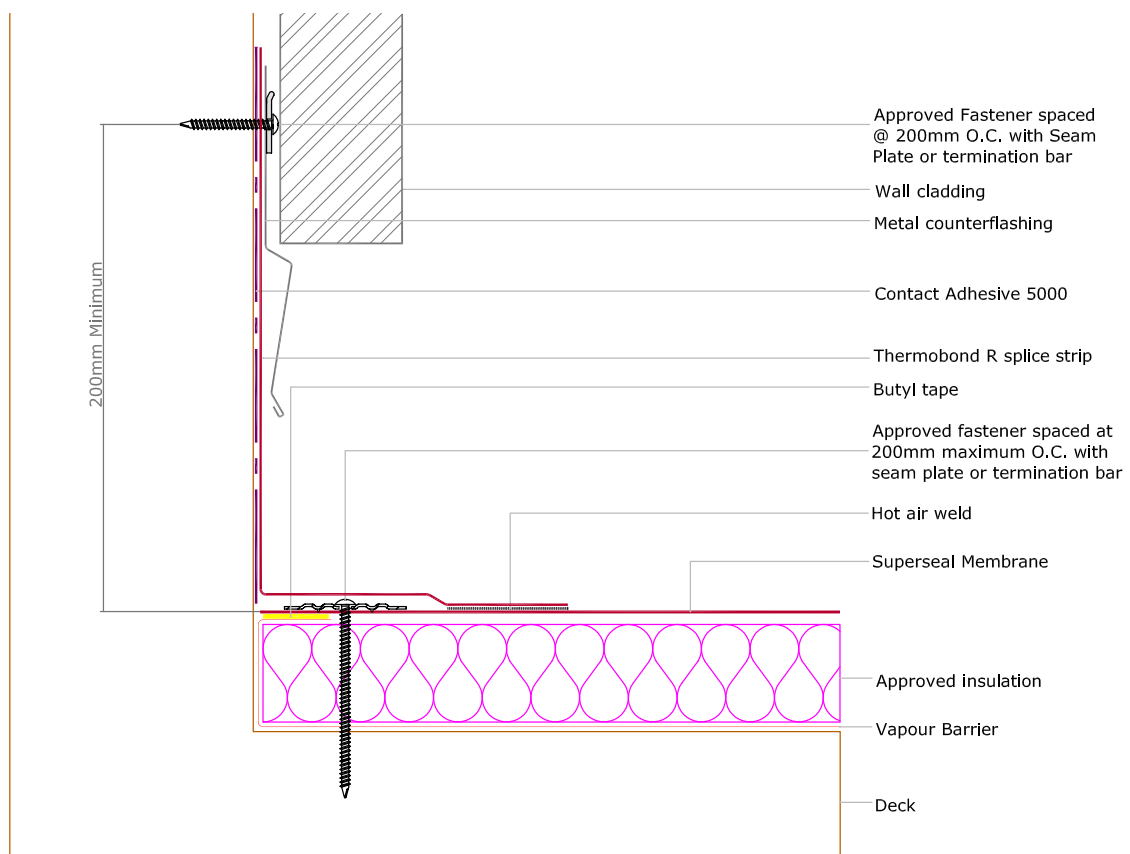
SUP-509

Clad wall panel system counterflashing for a cold roof - mechanically attached



SUP-510

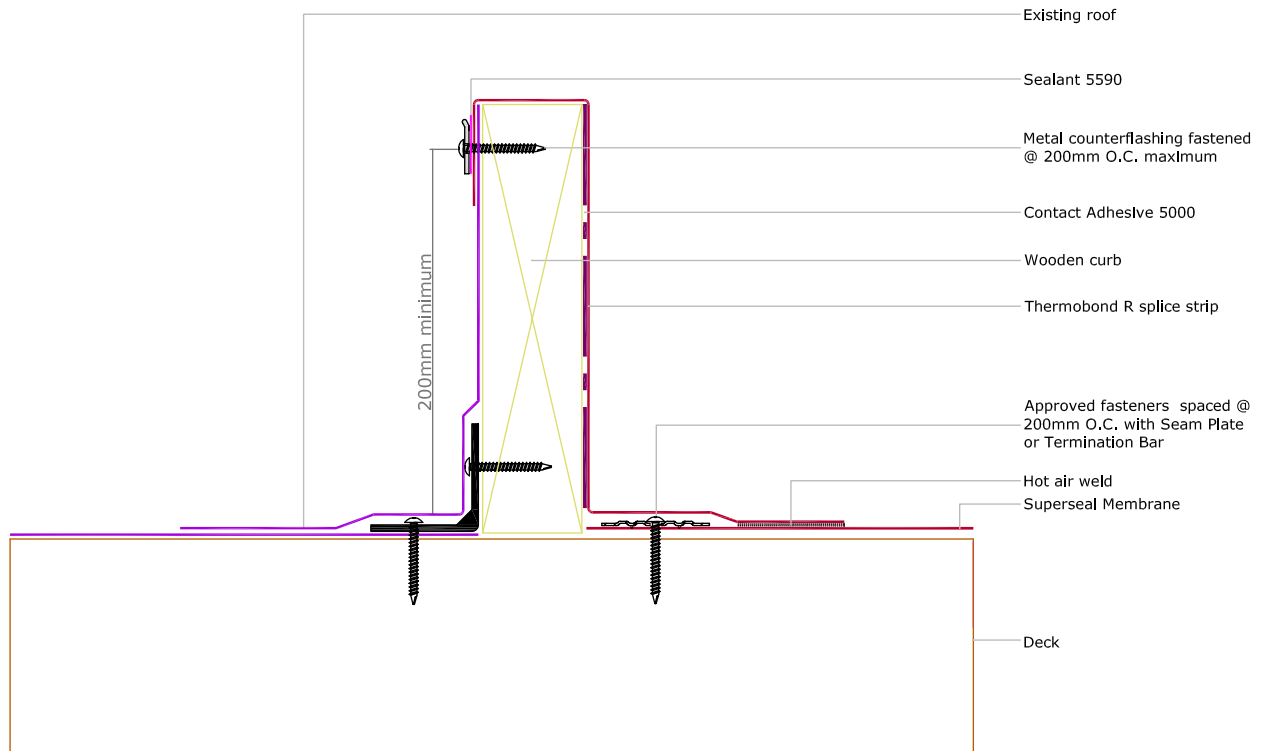
Clad wall panel system counterflashing for a warm roof - mechanically attached



TRANSITION DETAILS

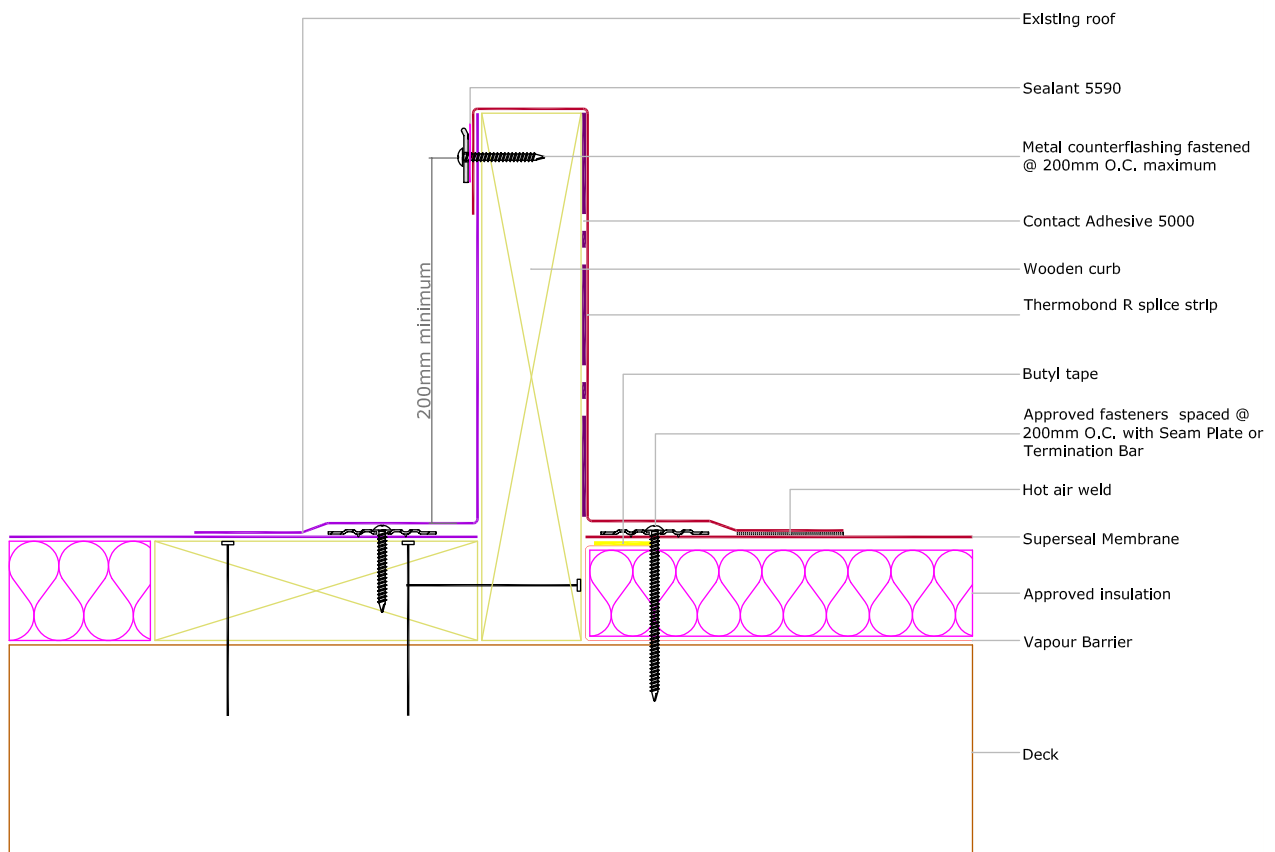
SUP-601

Multi-System Roof tie-in for a cold roof – mechanically attached



SUP-602

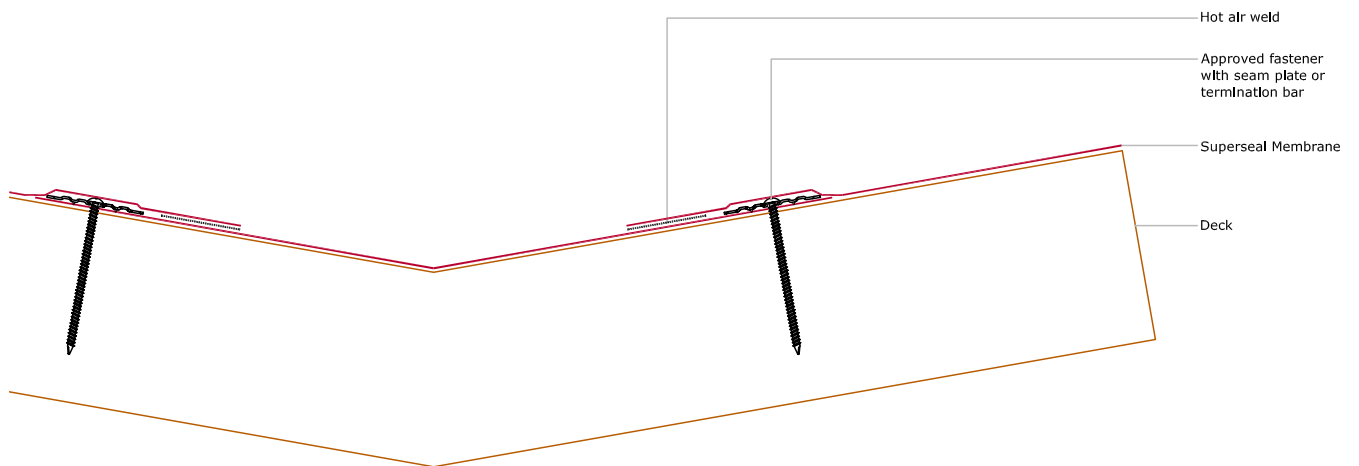
Multi-System Roof tie-in for a warm roof – mechanically attached



TRANSITION DETAILS

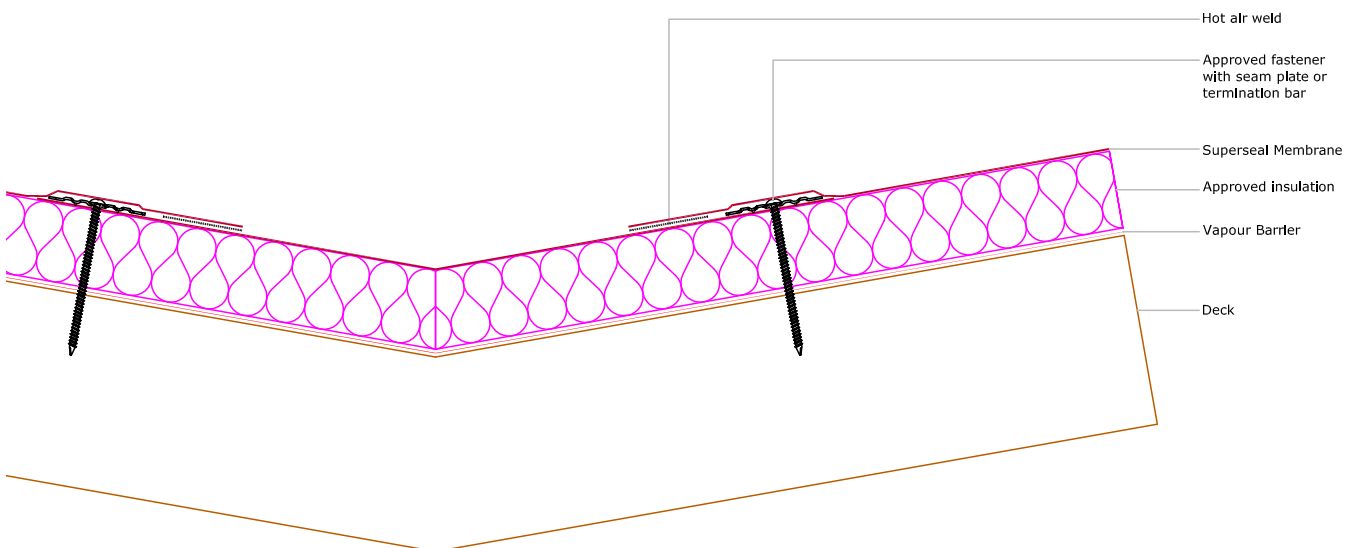
SUP-605

Valley detail for a cold roof – mechanically attached



SUP-606

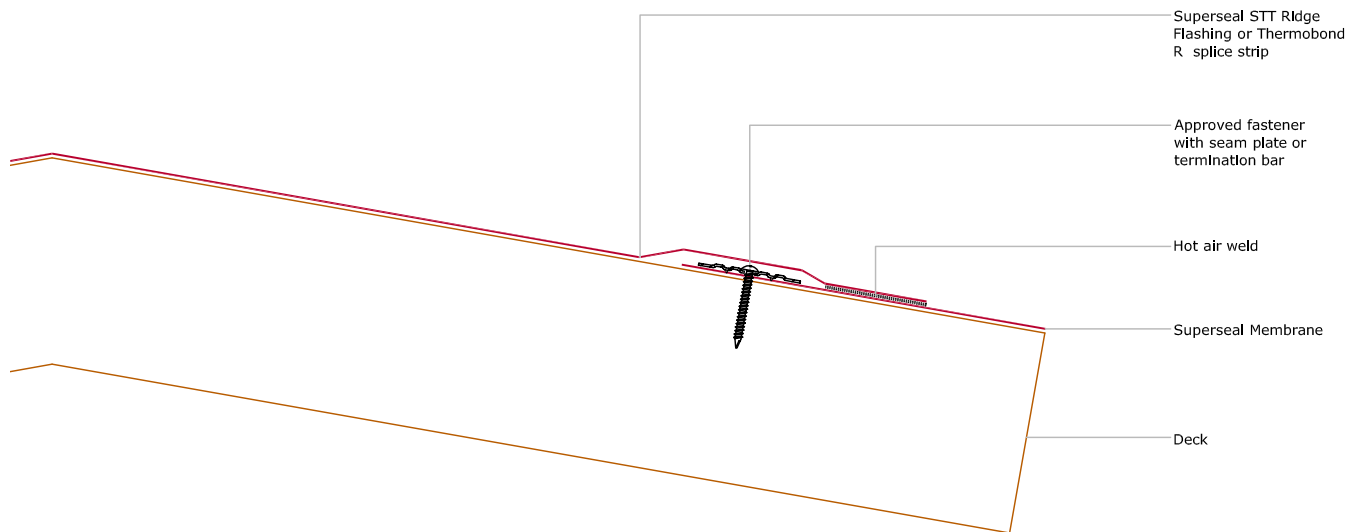
Valley detail for a warm roof – mechanically attached



TRANSITION DETAILS

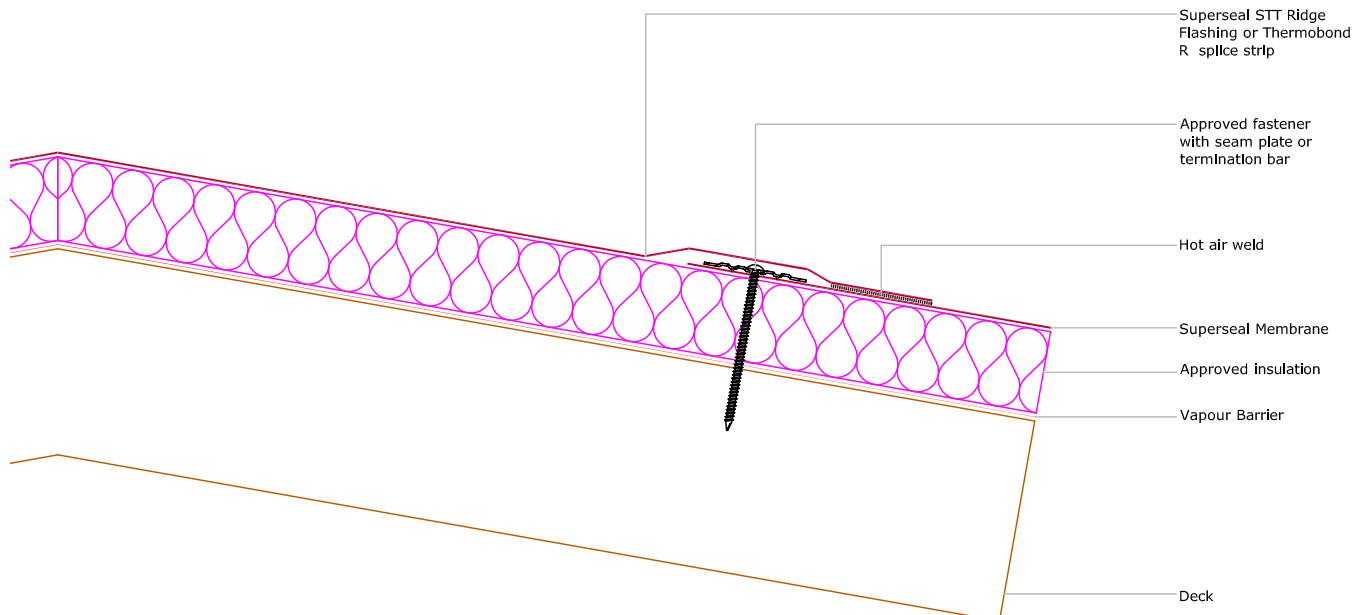
SUP-609

Ridge detail for a cold roof – mechanically attached



SUP-610

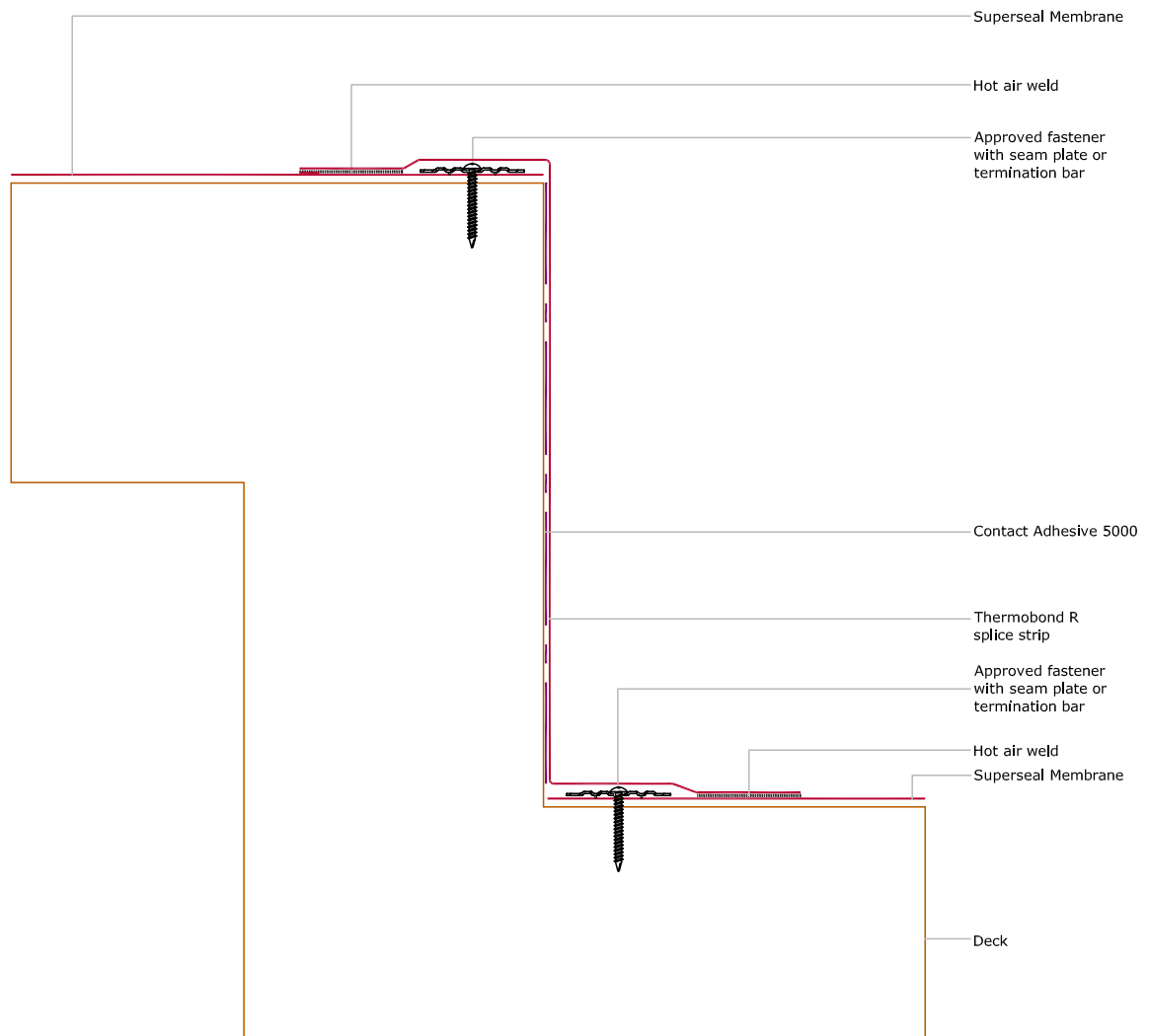
Ridge detail for a warm roof – mechanically attached



TRANSITION DETAILS

SUP-613

Multi-Level Roof tie-in for a cold roof – mechanically attached



TRANSITION DETAILS

SUP-614

Multi-Level Roof tie-in for a warm roof – mechanically attached

