

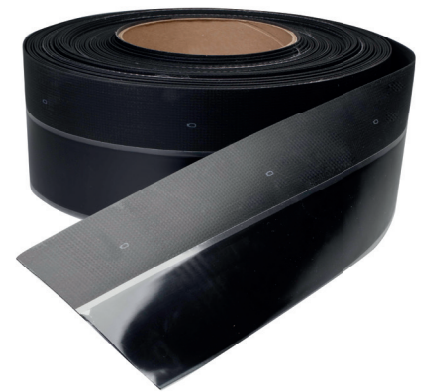
# Product Specification

## Reinforced Perimeter Strip

Reinforced Perimeter Strip is used as a base tie in for unbacked SealEco EPDM roofing membranes. The reinforced EPDM strip is partially coated with a Splice Tape and provides immediate adhesion to the EPDM membrane. Reinforced Perimeter Strip should always be used in conjunction with Single Ply Primer.

### Technical specifications

<b>Base:</b>	Synthetic Rubber
<b>Colour:</b>	Black
<b>Thickness EPDM:</b>	1.314 mm
<b>Width EPDM:</b>	152 mm
<b>Tape thickness:</b>	0.9 mm
<b>Tape width:</b>	76 mm



### Packaging

<b>Roll Width:</b>	152 mm
<b>Roll length;</b>	30.5 m
<b>Rolls/case:</b>	2 pcs
<b>Weight/case:</b>	19 kg
<b>Cases/pallet:</b>	36 pcs

### Application

All surfaces to be joined should be clean and dry. Ensure that the substrate is suitable for mechanical attachment prior to installation.

Fix the Reinforced Perimeter Strip with appropriate fasteners at max. 50mm from the upstand. Fold back the EPDM sheet to be applied and check that the surface is clean. If required, the membrane can be cleaned using Cleaning Wash 9700. Mark the overlap of the splice with a marker or chalk. Both sides of the overlap must be smooth and free from creases or tension. Using a scrub pad, apply Single Ply Primer to the area of the roofing membrane that will attach to the Splice Tape of the Reinforced Perimeter Strip. Wait until the primer has flashed off so that it dry to the touch but still tacky. Do not leave exposed for longer than 20 minutes (at 20°C 50% RV).

Remove the release paper from the Reinforced Perimeter Strip and roll the EPDM roofing membrane into the tape. Press firmly using a 50mm silicone pressure roller. Avoid trapping air between the EPDM roofing membrane and the Splice Tape.

Note: The non adhering part of the Reinforced Perimeter Strip should be adhered to the membrane using Contact Adhesive 5000. Consult the installation manual for further information.

### Limitations

Reinforced Perimeter Strip should not be installed in temperatures below +5° and above 40°C, or during rain, mist, strong winds or when there is a risk of condensation.

### Storage

Store in cool, dry conditions in the original packaging.

Shelf life: 12 months in the original packaging.

### Safety

Please read the safety data sheet before use.