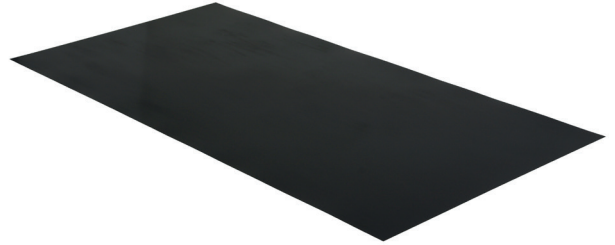


# TECHNICAL DATA SHEET

## THERMOBOND STEEL PLATE 2X1 M

Thermobond Steel Plate is used for perimeter profiles and can be cut and folded like ordinary galvanized steel sheets. The steel is laminated with a Thermobond layer which makes it possible to weld all other Thermobond based accessories.



### Technical data

<b>Type plate:</b>	Galvanised steel
<b>Thickness:</b>	0.6 mm
<b>Colour:</b>	Black
<b>Coating:</b>	Thermobond
<b>Thickness:</b>	0.3 mm
<b>Shelflife:</b>	Store cool and dry in the original packaging. There are no limitations in shelf life.

Width (mm)	Length (mm)	Thickness (mm)	Weight (kg/m <sup>2</sup> )	Package (pcs/pallet)*
1 000	2 000	0.9	4.6	50

\* Packed on a pallet 2.00 m x 1.00 m

### Directions for use

Thermobond Steel Plate is used for securing of roof terminations. The metal can be bended like ordinary metal plates, zinc, etc. The advantage of the plate is the Thermobond coating. All Thermobond accessories can be spliced with hot air onto the Sealant is part of the Thermobond accessories and is spliced with hot air. Thermobond seaming technique is unique and patented by SealEco, and can only be used on SealEco EPDM membranes. Thermobond is based on a thermoplastic rubber that can be seamed with conventional seaming methods for plastic material like hot air or hot wedge seaming. The Thermobond material is the base for a full range of accessories that gives good system solutions combining the unique properties of an elastomeric membrane with the seaming properties of the thermoplastics. Installations with Thermobond splicing are only authorised for fully trained installers. Consult the instruction manual before use.

### Suitable substrates

Thermobond R splicing will usually be used for splicing SealEco EPDM membranes in roofing applications. The EPDM membrane has to be clean and dry. Oxidized surfaces have to be grinded and cleaned with Cleaner 9700. Splicing is possible between -15°C and 40°C. Splicing is not allowed during precipitation.

### Application

Please read installation manual before use.

### Disclaimer

Information contained in this data sheet is up-to-date and correct as at the time of issue. For latest version please always check [www.sealeco.com](http://www.sealeco.com)