

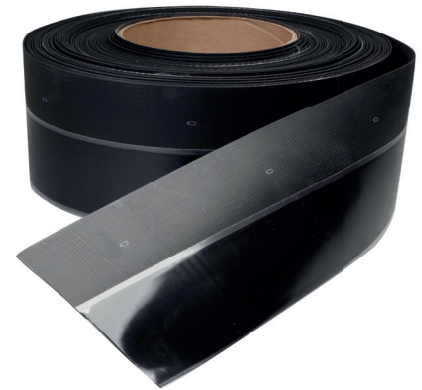
# TECHNICAL DATA SHEET

## REINFORCED PERIMETER STRIP

Reinforced Perimeter Strip is used as a base tie-in for unbacked SealEco EPDM roofing membranes. The reinforced EPDM strip is partially coated with a Splice Tape and provides immediate adhesion to the EPDM membrane. Reinforced Perimeter Strip should always be used in conjunction with Single Ply Primer.

### Technical data

<b>Base:</b>	Synthetic Rubber
<b>Colour:</b>	Black
<b>Thickness EPDM:</b>	1.14 mm
<b>Width EPDM:</b>	152 mm
<b>Tape thickness:</b>	0.9 mm
<b>Tape width:</b>	76 mm
<b>Shelf life:</b>	12 months in the original packaging when stored in cool, dry conditions



Width (mm)	Roll length (m)	Rolls/case (pcs)	Weight/case (kg)	Cases/pallet (pcs)
152	30.48	2	19.0	36

### Directions for use

All surfaces to be joined should be clean and dry. Ensure that the substrate is suitable for mechanical attachment prior to installation. Fix the Reinforced Perimeter Strip with appropriate fasteners along the upstand. Fold back the EPDM sheet to be applied and check that the surface is clean. If required, the membrane should be cleaned using Cleaning Wash 9700. Mark the overlap of the splice with a marker or chalk. Both sides of the overlap must be smooth and free from creases or tension. Apply Single Ply Primer, with a scrub pad to the area of the roofing membrane that will attach to the Seam Tape of the Reinforced Perimeter Strip. Wait until the primer has flashed off. Do not leave exposed for longer than 20 minutes (at 20°C 50% RH). Remove the release foil from the Reinforced Perimeter Strip and roll the EPDM roofing membrane into the tape. Press firmly using a 40 mm silicone roller. Avoid air blisters between the EPDM roofing membrane and the Seam Tape.

### Note:

The non adhering part of the Reinforced Perimeter Strip should be adhered to the membrane using Contact Adhesive. Reinforced Perimeter Strip should not be installed in temperatures below +5° and above 40°C, or during rain, mist, strong winds or when there is a risk of condensation. Consult the installation manual for more information.

### Disclaimer

Information contained in this data sheet is up-to-date and correct as at the time of issue. For latest version please always check [www.sealeco.com](http://www.sealeco.com)