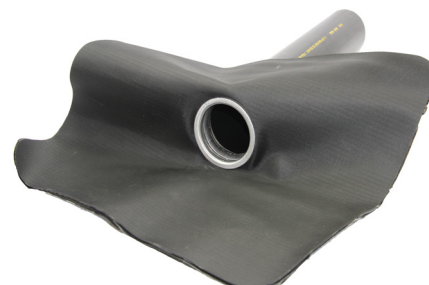


# TECHNICAL DATA SHEET

## RUBBERSHELL PE DRAIN

Roof drain in polyethylene (HDPE) with a RubberShell flange.  
The drain is hot air welded to RubberShell membranes.



### Technical data

<b>Type of tube:</b>	Polyethylene HDPE
<b>Thickness tube:</b>	Min. 3 mm; depending on the diameter
<b>EPDM type:</b>	RubberShell
<b>Thickness EPDM:</b>	2.5 mm
<b>Colour:</b>	Black
<b>Shelf life:</b>	12 months in a well ventilated and dry storage place at temperatures in between +5°C and 30°C.

### Packaging

Diameter (mm)	Length (mm)	Flap (mm)	Discharge flow rate (L/sec.) (*)	Packaging (pcs/box)
50	500	280 x 280	to be determined	20
56	500	280 x 280	to be determined	18
63	500	280 x 280	to be determined	15
75	500	280 x 280	to be determined	15
90	500	280 x 280	5.2	12
110	500	400 x 400	8.9	9
125	500	400 x 400	to be determined	9
160	500	400 x 400	to be determined	4
200	500	400 x 400	to be determined	4
250	500	400 x 400	to be determined	4

Availability depending on country. Please contact your local supplier for more information.

(\*) Vertical drainage.

### Directions for use

Follow all guidelines as described in the manual of the relevant EPDM system.

### Suitable substrates

A RubberShell PE Drain can only be hot air welded to RubberShell membranes. All surfaces to be connected must be clean and dry. If the EPDM has oxidised, it should be grinded with a nylon brush and cleaned, before splicing.

A RubberShell PE Drain cannot be installed in temperatures below +5°C and above 30°C; during rain, mist or where there is a risk of condensation or strong winds. When applied between +5°C and 15°C SealEco recommends to store the drain at room temperatures prior to use. Consult our installation manuals for more information.

### Disclaimer

Information contained in this data sheet is up-to-date and correct as at the time of issue. For latest version please always check [www.sealeco.com](http://www.sealeco.com).