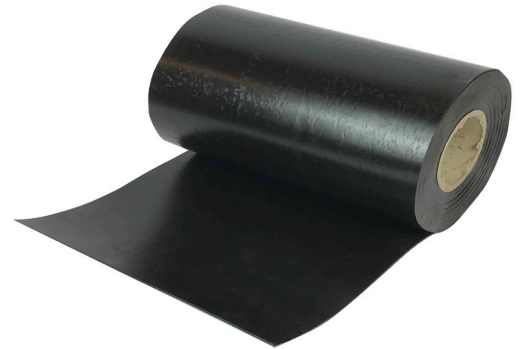


# TECHNICAL DATA SHEET

## THERMOBOND 100 FLASHING

Homogenous Thermobond 100 Flashing for making 3-dimensional details like site build corners or irregular shaped details during roof installations. Can also be used for trouble-shooting, T-joints and repairs. Thermobond 100 Flashing is spliced with hot air.



### Technical data

<b>Reinforcement:</b>	None
<b>Thickness:</b>	2 mm
<b>Colour:</b>	Black
<b>Shelf life:</b>	Store cool and dry in the original packaging. There are no limitations in shelf life.

### Packaging

Width (mm)	Thickness (mm)	Length (m)	Weight (kg/roll)	Max roll/pallet
150	2.0	10	4.3	24x8
300	2.0	10	8.7	24x4
450	2.0	10	13.0	24x2
600	2.0	10	17.3	24x2

Availability depending on country. Please contact your local supplier for more information.

### Directions for use

Thermobond seaming technique is unique and patented by SealEco. Thermobond is based on a thermoplastic rubber that can be seamed with conventional seaming methods for plastic material like hot air or hot wedge seaming. The Thermobond material is the base for a full range of accessories that gives good system solutions combining the unique properties of an elastomeric membrane with the seaming properties of the thermoplastics.

Thermobond 100 Flashing is used for T-joints and making 3D details with hot air and should be fully spliced to the substrate. In case of stresses Thermobond 100 Flashing should be replaced with Thermobond (R) Splice Strip. Thermobond can be welded to all SealEco EPDM membranes. Installations with Thermobond splicing are only authorised for installers fully trained by SealEco. Consult our installation manuals for more information.

### Splicing conditions

Thermobond 100 Splicing can only be done on SealEco EPDM membranes. The EPDM membrane has to be clean and dry. Oxidized surfaces have to be grinded and cleaned with Cleaning Wash 9700. Splicing is possible between -15°C and 40°C. Splicing is not allowed during precipitation.

### Disclaimer

Information contained in this data sheet is up-to-date and correct as at the time of issue. For latest version please always check [www.sealeco.com](http://www.sealeco.com).